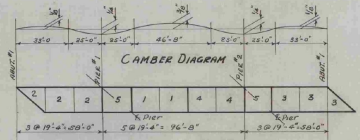


GIRDER DETAILS SPAN NO. 1
SPAN NO. 3 SIMILAR
SCALE: 3/8" = 1'-0"

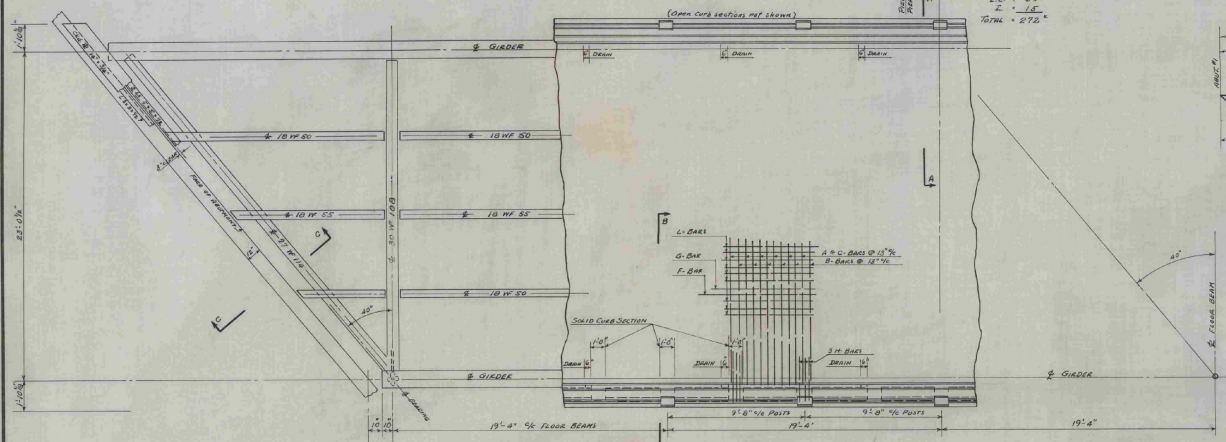
GIRDER DETAILS SPAN NO. 2
SYMMETRICAL ABOUT CENTERLINE
SCALE: 3/8" = 1'-0"

MAXIMUM SHEARS & MOMENTS

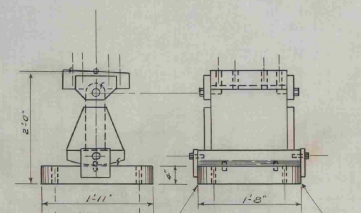
		SHEAR	MOMENT
EXT. STRINGER	D.L.	3.1	7.2
	L.L.	2.0	2.0
	TOTAL	5.1	12.0
I. STRINGER	D.L.	7	3.2
	L.L.	20	0.4
	TOTAL	27	2.8
FLOOR BEAMS	D.L.	34	14.3
	L.L.	39	1.96
	TOTAL	73	2.8
GIRDER @ PIERS	D.L.	103	16.06
	L.L.	48	4.68
	TOTAL	151	20.74
GIRDER BETWEEN ILL. PIERS	D.L.	844	55.4
	L.L.	18.6	12.6
	TOTAL	862.6	68.0
GIRDER @ SPICE	D.L.	30	33.0
	L.L.	33	29.1
	TOTAL	63	62.1
GIRDED END SPAN	D.L.	54	2.70
	L.L.	33	4.19
	TOTAL	87	6.89



ORDER OF CONCRETE POURING
ANY METHOD DIFFERENT THAN THAT INDICATED HERE MUST BE SUBMITTED TO THE ENGINEER FOR APPROVAL.

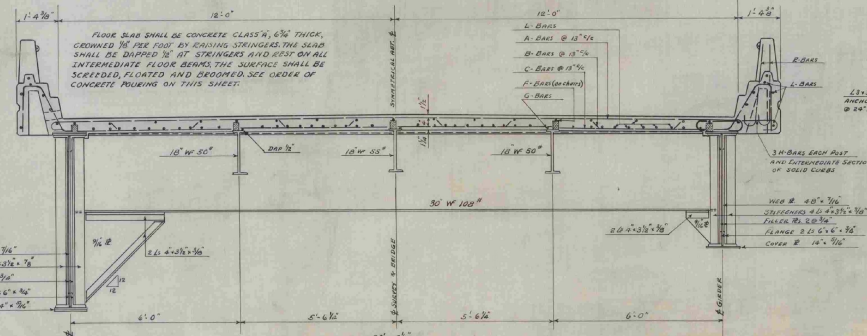


PART PLAN
SCALE: 3/8" = 1'-0"



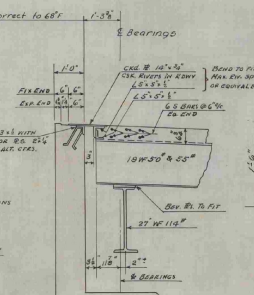
DETAILS OF EXPANSION BEARING ABUT. #1 - PIERS #1 & 2
SCALE: 1" = 1'-0"

DESIGN DATA:
2 H-15 LINE LOADING WITH 25%¹
DRAINING ALLOWANCE A.A.B.N.O. SPECIFICATIONS FOR REES. 3 CIVILS.
DIMENSIONS SHALL BE CORRECT FOR 68°F.

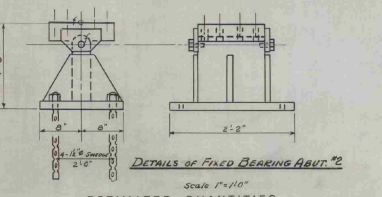


HALF SECTION A-A
SCALE: 3/8" = 1'-0"

HALF SECTION B-B
SCALE: 3/8" = 1'-0"



SECTION C-C
EXPANSION END SHOWN
FIXED END SIMILAR EXCEPT AS INDICATED.



DETAILS OF FIXED BEARING ABUT. #2
SCALE: 1" = 1'-0"

ESTIMATED QUANTITIES

STEEL SUPERSTRUCTURE (216,000')	1 LS.
CONCRETE CLASS "A"	111 CY.
REINFORCING STEEL	32,910 LBS.
CABLE GUARD RAIL	436 L.F.
CONCRETE CLASS "A" R	25' C.F.

SUPERSTRUCTURE DETAILS

SABIN BRIDGE
WESTMINSTER

Scale as shown
Sheet 1 of 2 Sheets

Surveyed by
Designed by H.A.S.
Drawn by H.A.S.
Traced by D.W.P.
Checked by L.M.B.
Series No.
Date 4/10/40
7/1/40
Sheet 6 of 31 Sheets